



Insound

Noise Reduction & Thermal Insulation Solution

600mm x 1200mm x 40mm

Insound is specifically engineered to effectively manage reverberated noise while enhancing the thermal performance and energy efficiency of buildings. Designed for installation beneath masonry and metal pan floors and ceilings, Insound significantly contributes to overall noise absorption and thermal efficiency. Its innovative formulation ensures optimal sound insulation and thermal regulation, creating a more comfortable and energy-efficient environment.

Flame Resistant
US: ASTM 84 A Class
EU: B-s1,d0 (EN 13501-1)

Thermal Insulation
0.033 W/mK
ASTM C518

%60 Recycled content

%100 Recyclable

Low VOC
Emission free
Odorless

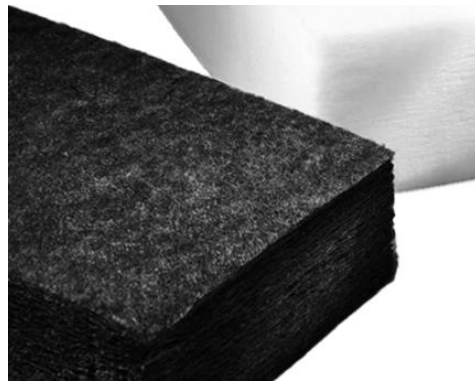
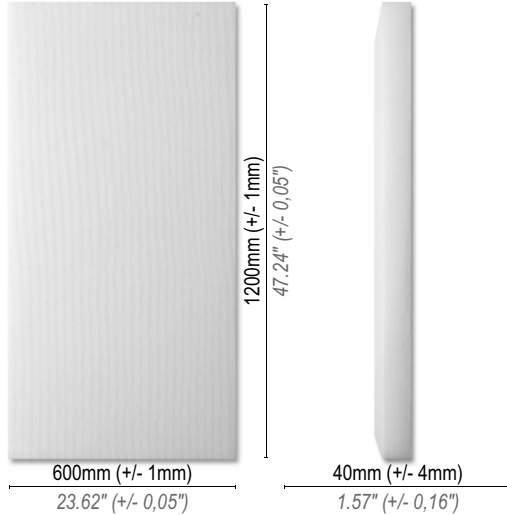
99.9% Antibacterial test (ISO-20743:2013)

Durable

Non-Toxic No Chemicals

Does Not Hold Moisture

Light fastness 4+
(ISO-105 B02)



INSTALLATION

Proper installation is crucial for maximizing the performance of Insound. Follow these guidelines to ensure optimal results:

Preparation: Before installation, ensure that the surfaces are clean, dry, and free from any debris. This will promote better adhesion and performance.

Tools Required: Gather all necessary tools, including a utility knife, measuring tape, adhesive, and safety equipment.

Measurement: Carefully measure the area where Insound will be installed. Cut the material to the required dimensions, ensuring a snug fit without gaps.

Installation Process:

Begin by applying adhesive to the designated area. Position the Insound panels beneath the masonry or metal pan floors and ceilings. Press firmly to ensure full contact with the adhesive.

AVAILABLE COLORS



APPLICATION

Wall & Ceiling - Indoor use only

MATERIAL

Thermobonded industrial "Pluffy" felt.
100% PET up to 60% Recycled content & Recyclable

FIRE RATING

A Class (ASTM E84) - B s1 d0 (EN 13501-1)

THERMAL INSULATION

0,033 W/mK (ASTM C518)

WEIGHT & DENSITY

1 unit: 1000 gr. +/- 10% tolerance
1 unit: 2.205 lbs with +/- 10% tolerance
35 kg / m³

THICKNESS

Smooth Surface
Impact Resistance
Flexible
40mm (+/- 4mm) - 1.57" (+/- 0.16")

PACK SIZE & CONTENT

W: 600 mm D: 1200 mm H: 200 mm
W: 24.5" D: 26" H: 5.9"
1 Pack: 10 x pcs.
1 Pack: 7.2 m²
1 Pack: 77.5 ft²
1 Color of choice per package
Gross weight: 14 kg
Gross weight: 31 lbs

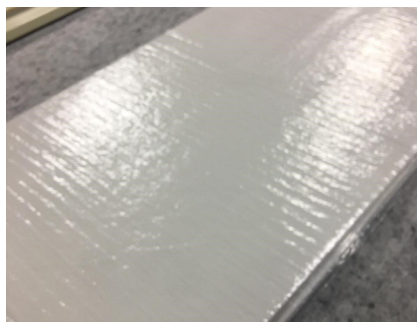
PACKING DETAILS

Compress & Save

Less Space

Lower Freight Costs

The "Insound" packaging offers you significant advantages. It includes 10 products, each measuring 600mm x 1200mm, compressed into a single package, occupying half of the total usable volume.



ACOUSTIC PERFORMANCE

